

# LOWE'S OF LAKE PARK

BEING A PORTION OF  
SECTION 19, TOWNSHIP 42 SOUTH, RANGE 43 EAST  
TOWN OF LAKE PARK, PALM BEACH COUNTY, FLORIDA

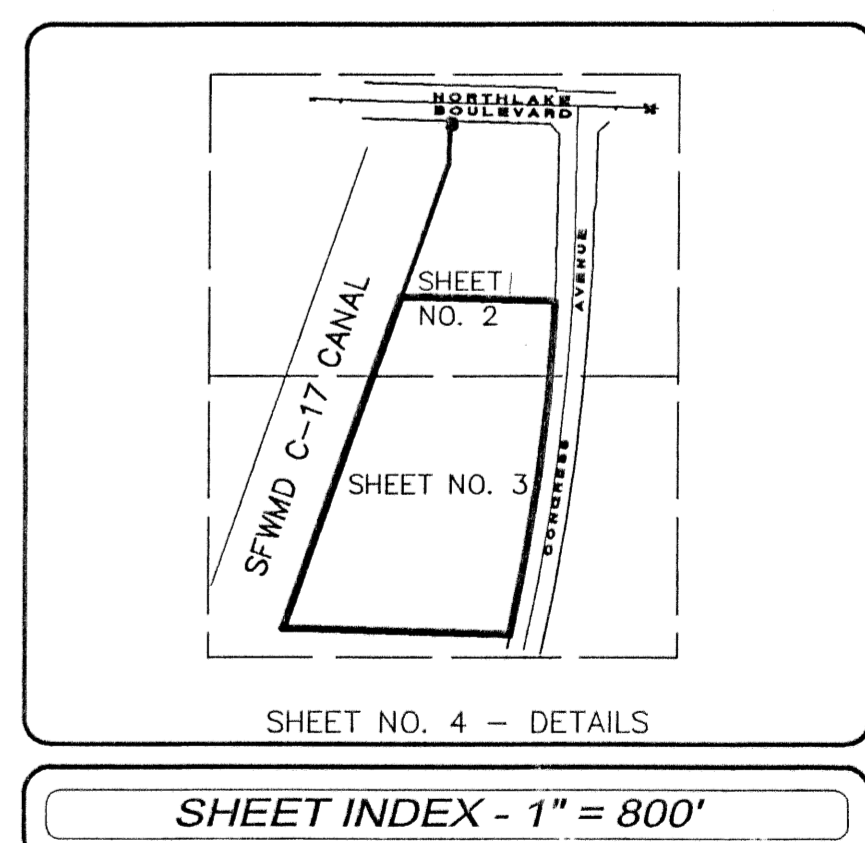
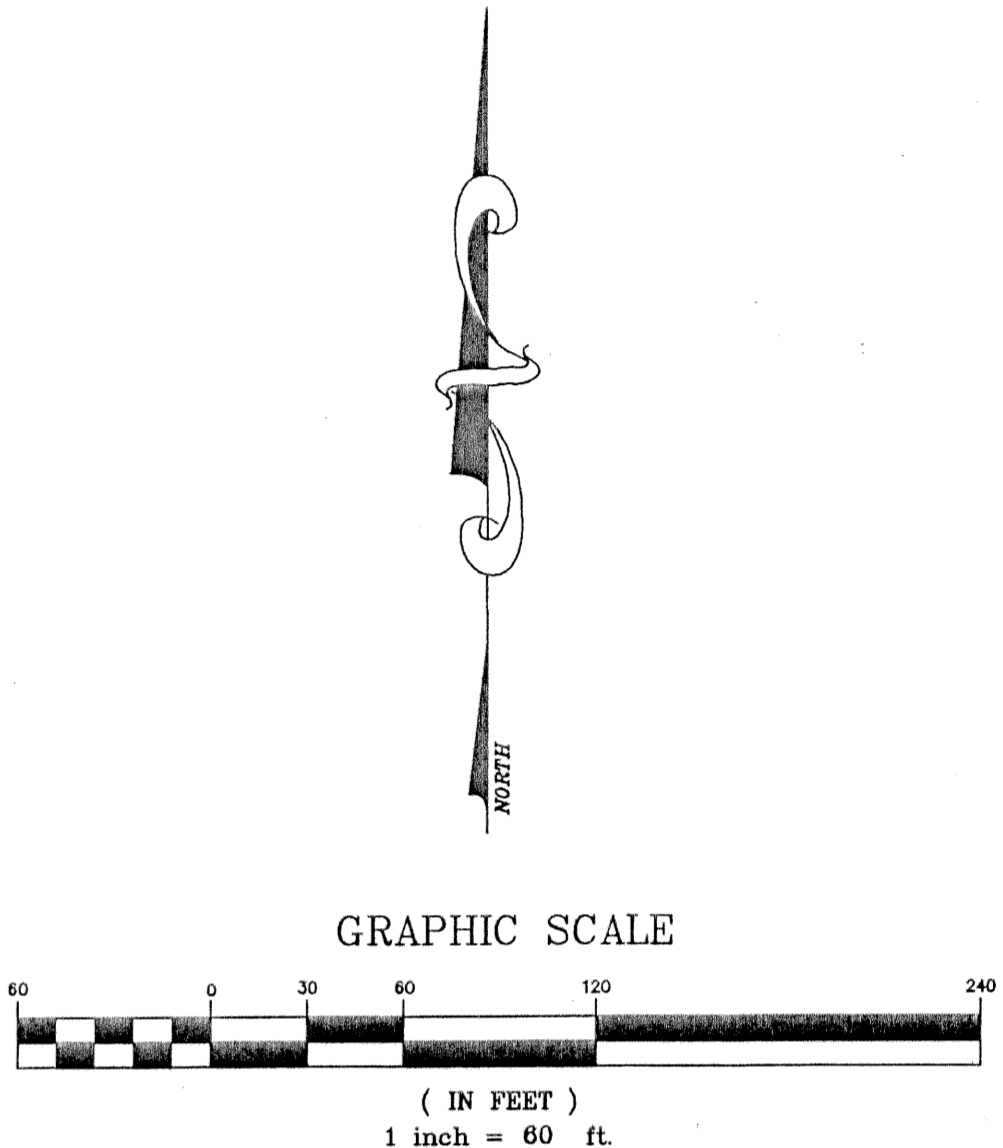
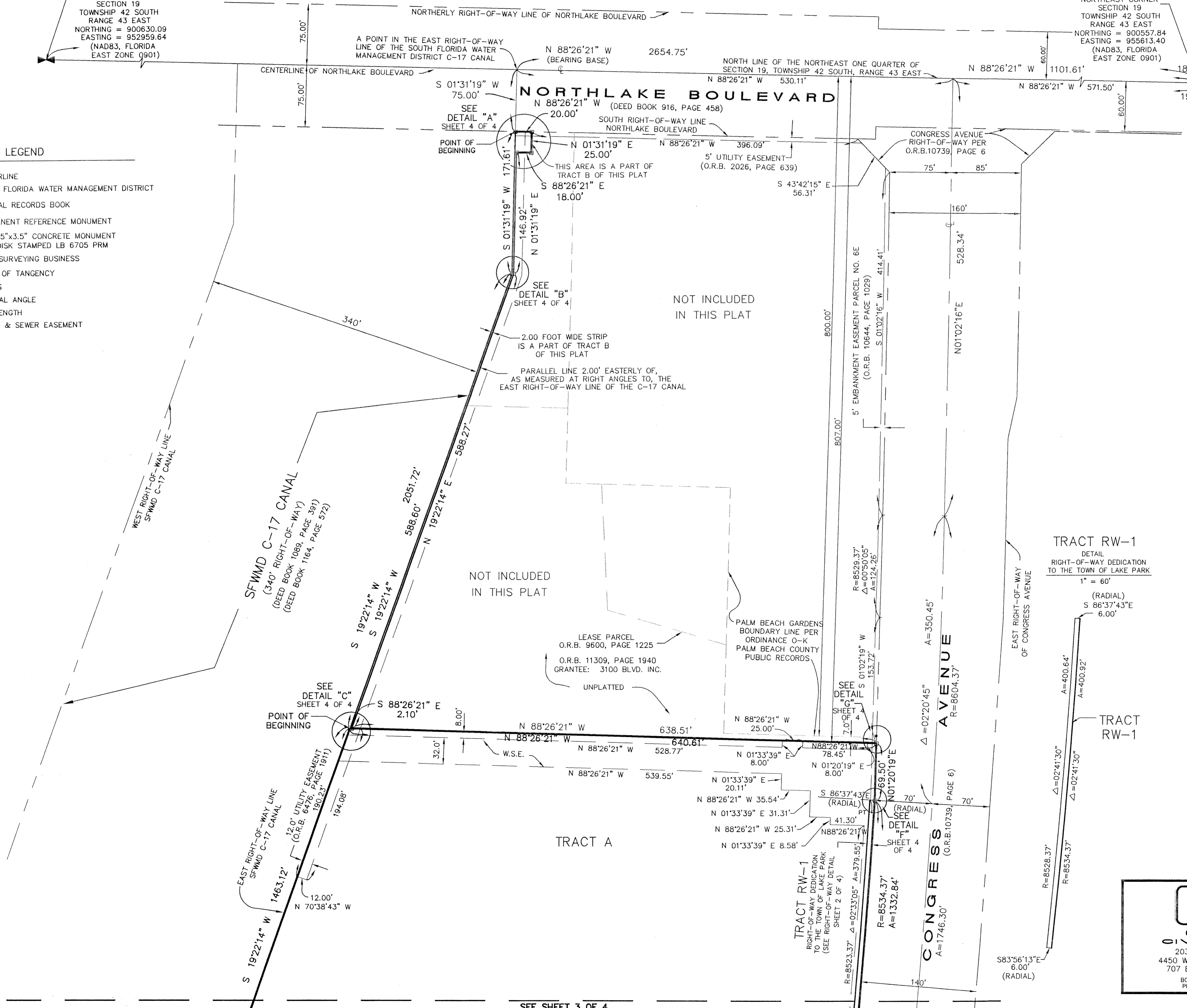
# 200

STATE OF FLORIDA  
COUNTY OF PALM BEACH  
THIS PLAT WAS FILED FOR RECORD \_\_\_\_\_ THIS \_\_\_\_\_  
DAY OF \_\_\_\_\_, 2003 AND DULY RECORDED IN  
PLAT BOOK \_\_\_\_\_ ON PAGES \_\_\_\_\_ AND \_\_\_\_\_  
DOROTHY H. WILKEN, CLERK  
BY: \_\_\_\_\_, D.C.  
CIRCUIT COURT SEAL

FOUND PALM BEACH COUNTY  
BRASS DISK STAMPED  $\frac{18}{19}$   
NORTH 1/4 CORNER  
SECTION 19  
TOWNSHIP 42 SOUTH  
RANGE 43 EAST  
NORTHING = 900630.09  
EASTING = 952959.64  
(NAD83, FLORIDA  
EAST ZONE 0901)

POINT OF  
COMMENCEMENT  
NORTHEAST CORNER  
SECTION 19  
TOWNSHIP 42 SOUTH  
RANGE 43 EAST  
NORTHING = 900557.84  
EASTING = 955613.40  
(NAD83, FLORIDA  
EAST ZONE 0901)

- LEGEND**
- ⊕ CENTERLINE
  - SFWM SOUTH FLORIDA WATER MANAGEMENT DISTRICT
  - O.R.B. OFFICIAL RECORDS BOOK
  - P.R.M. PERMANENT REFERENCE MONUMENT
  - ⊠ SET 3.5"x3.5" CONCRETE MONUMENT WITH DISK STAMPED LB 6705 PRM
  - LB LAND SURVEYING BUSINESS
  - PT POINT OF TANGENCY
  - R RADIUS
  - △ CENTRAL ANGLE
  - A ARC LENGTH
  - W.S.E. WATER & SEWER EASEMENT



**ENGINEERS INC.**  
CREECH ENGINEERS, INC.  
CIVILIZATION ENGINEERED

203 WEST 3rd STREET STUART, FLORIDA 34994 (772)283-1413  
4450 WEST EAU GALLIE BLVD., MELBOURNE, FL 32934 (321) 255-5434  
707 EAST PARK AVENUE, TALLAHASSEE, FL 32301 (850) 841-1705

BOARD OF PROFESSIONAL ENGINEERS, CERTIFICATE OF AUTHORIZATION NUMBER 5139  
PROFESSIONAL SURVEYORS AND MAPPERS, AMENDED CERTIFICATE NO. LB-0006705